



EQUINE
surefootmat®

“enhancing animal welfare under foot”

Sales Hotline: 1800 255 943 Email: sales@rpsindustries.com.au
RPS Industries Pty Ltd - 8 Venture Way, Pakenham, Victoria 3810

www.surefootmat.com.au

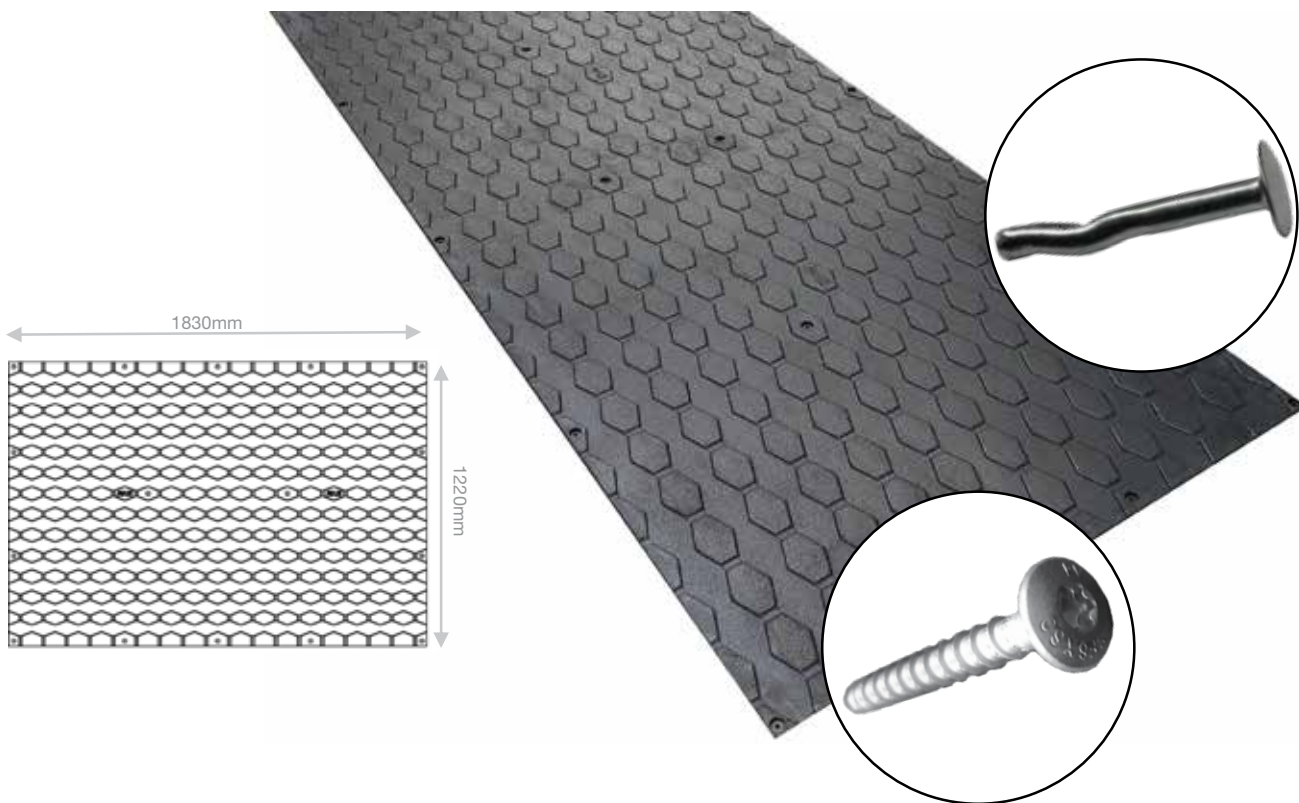


Quick Reference Index

PAGE

| | | |
|---|--------------------------------------|-------------------------------------|
| ● | ProLite® mat | |
| | Technical Specifications | 3 |
| | Product in Focus | 4 |
| | Applications | 5 & 6 |
| ● | SureCushion® | |
| | Technical Specifications | 7 |
| | Product in Focus | 8 |
| | Applications | 9 |
| | Case Studies | Shane Nichols Racing 10 & 11 |
| ● | SureFoot® mat | |
| | Technical Specifications | 12 |
| | Applications | 13 |
| | Case Studies | Wyong Race Club 14 |
| | | Cranbourne Training Centre 15 |
| | | McEvoy / Mitchell Racing 16 |
| ● | Cloth Insertion | |
| | Technical Specifications | 17 |
| | Applications | 18 |
| | Case Studies | McDonald Equestrian 19 |
| ● | SureFoot® Tailgate mats | |
| | Technical Specifications | 20 |
| | Applications | 21 |
| | Case Studies | Transmend 22 |
| ● | Agri Ground Cell® | |
| | Technical Specifications | 23 |
| | Applications | 24 |
| | Case Studies | Lindsay Park 25 |
| ● | SureCushion® One Piece Stable | |
| | Technical Specifications | 26 |
| | Case Studies | Maffra Veterinary Clinic 27 |
| ● | Other Surfacing Products | |
| | SureGrip® mat | 28 |
| | Deluxe Tailgate mat | 28 |
| ● | Showcase Installations | |
| | Horse Studs | 29 |
| | Race Courses | 31 |
| | Equine Complexes | 33 |
| | Training Centres | 34 |
| | Veterinary Clinics | 35 |

The **ProLite® mat** provides a safer surface underfoot, protecting the welfare of both animals and people.



Technical Specifications

| Product | 1.83 Mat | 2.4 Mat |
|-----------------------|--|--------------|
| Thickness | 15mm | 15mm |
| Length | 1830mm | 2400mm |
| Width | 1220mm | 1000mm |
| Weight | 45kg per mat | 50kg per mat |
| Material | 50% Natural rubber 50% Reclaim Rubber Vulcanised Closed Cell Rubber (Shore Hardness 65 +2) (Density 5 mpa) | |
| Method of fixing | RPS concrete fasteners; steel fasteners or timber fasteners | |
| Safety information | Non-hazardous Non-dangerous Low ignition source Accelerant required to ignite No leaching | |

Environmental Benefits:

Being manufactured from reclaimed SBR / Natural tyre rubber, the **ProLite® mat** is a green product and reduces the carbon foot-print.

*The **ProLite®** mat's revolutionary diamond pattern design ensures a safer surface underfoot.*



How the ProLite® mat solves the problem

1. It provides a soft and 'forgiving' surface that reduces impact and protects the hoof's soft tissue from unnecessary trauma and damage;
2. The unique diamond pattern helps provide a secure footing for the animals, significantly reducing the incidence of slippage and catastrophic tendon damage;
3. **ProLite®** mats are also quicker and easier to clean - saving valuable water and time.

Slipping and Spreading

Asphalt, concrete or other unstable surfaces in equine facilities can be slippery and dangerous. Combined with the use of metal horse shoes it is a significant concern for operators. Impacts include:

- Potential injury to handlers when horses fall over
- Spreading as they attempt to get up which can cause catastrophic damage
- Destruction of the animal (replacement cost)
- Distress caused to other horses in the surrounding environment

Easy Installation

ProLite® mats are easily installed over any concrete, metal or timber surface using our fixing products. Mats can be cut using a Stanley/utility knife.

A Good Investment

ProLite® mat is a simple, yet powerfully effective product that helps operators maintain a high level of safety without the need for ongoing management or intervention.

Once installed, **ProLite®** mats continue to deliver financial and facility management benefits for many years.

Cleaner Environment

The use of **ProLite®** mats provides exceptional improvement for a cleaner environment. The level of dust from dirty surfaces and the harbouring of harmful bacteria is eliminated.

Hard Wearing Rubber Compound

The **ProLite®** mat is manufactured using a hard wearing and extremely durable rubber compound which has been especially formulated for this purpose. The compound blend of recycled and new virgin rubbers also features superior shock absorbing properties which provides outstanding protection for animals.

Applications:

- Wash bays
- Horse walkers
- Tie up areas
- Breezeways
- Transport



Horse Walker - Jason Warren



Tie Ups



Wash Bay - Tony McEvoy



Transport - Julien Welsh



Breezeway



Horse Walker - Richie Cully



Wash Bay



Horse Walker



Walkway / Washbays



Breezeway



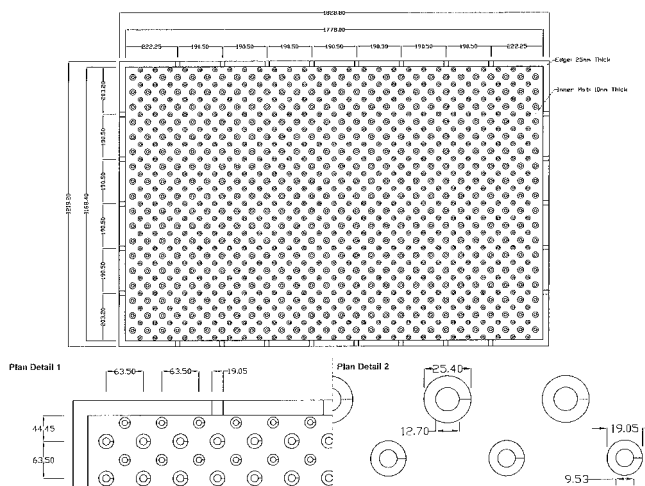
Tie Ups



Transport



The **SureCushion® mat** provides exceptional cushioning and durability, and dramatically improves your animal's welfare under foot.



Technical Specifications

| | |
|-----------|--------------------------------|
| Thickness | 25mm |
| Width | 1830mm x 1220mm x 25mm |
| Weight | 45kg |
| Material | Reclaimed SBR & natural rubber |

*The **SureCushion® mat** is the pinnacle for animal comfort and improves your animal's welfare underfoot.*



Benefits:

- Greater animal comfort - provides a soft and warm floor that insulates your horse against cold and dampness.
- Eliminates bedding which can generate harmful dust and costly man hours in mucking out stalls. Bedding can also be displaced leaving exposed floors.
- Unique design allows for exceptional drainage, cushioning and superior ventilation and inhibits bacteria growth.
- High quality rubber compound which is incredibly long lasting.



Environmental Benefits:

Being manufactured from reclaimed SBR/ Natural tyre rubber, the **SureCushion® mat** is a 'green' product and reduces the carbon foot-print.

Applications:

- Horse Stables
- Exercise Areas
- Vet Bays
- Easy to install





Stables - After



Stables



Stables



Transport



Transport



Stables - Golden Plains Veterinary Clinic



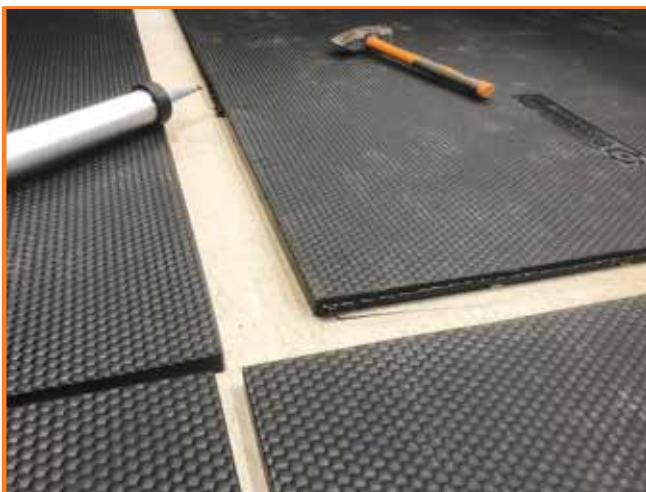
Holding Yards - Golden Plains Veterinary Clinic



Stables - Equestrian Complex



Stables - Equestrian Complex



Stables - Yulong Stud (glued)



Stables - Yulong Stud (glued)

Shane Nichols Racing



Shane had this to say;

RPS provided me with the **Sure Cushion® mat**, I was pleasantly surprised how much comfort they gave my horses. It didn't take long before they started to pay for themselves as we use a lot less bedding and labour was reduced dramatically. I feel comfortable knowing that my horses have secure footing when using the **SureFoot® mat** in the walker and wash bay.

Overall I am pleased with the products and services provided and wouldn't hesitate to recommend them and their products to others"

Shane Nichols is a race horse trainer who recently relocated to a new facility in Mornington VIC, where he trains approximately 26 horses at one time.

Upon moving, there was a 20 box stable complex, wash bay, horse walker and round yard that had to be completed.

After being contacted by our RPS Representative, Shane wanted to give his horses the best possible comfort and support which lead him to invest in our rubber matting. This gave them the chance to perform to the best of their ability on race days.

The new concrete flooring in the stables just didn't cut it, so the **SureCushion® mats** were installed providing the horses with added comfort and insulation against the cold. With less bedding needed, there was less mucking out each day and the mats started to pay for themselves straight away. The cushioned feet underneath the **SureCushion® mats** provide aeration and drainage whilst also reducing stress on tendons.



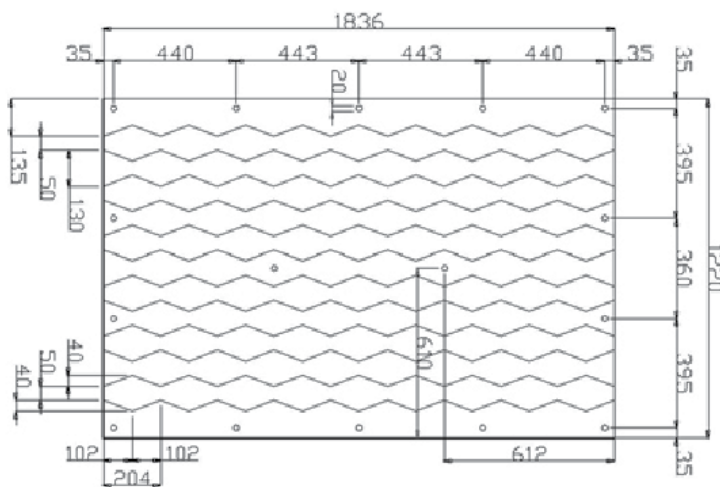
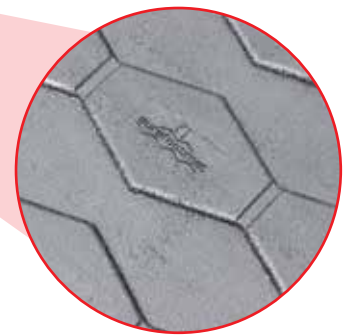
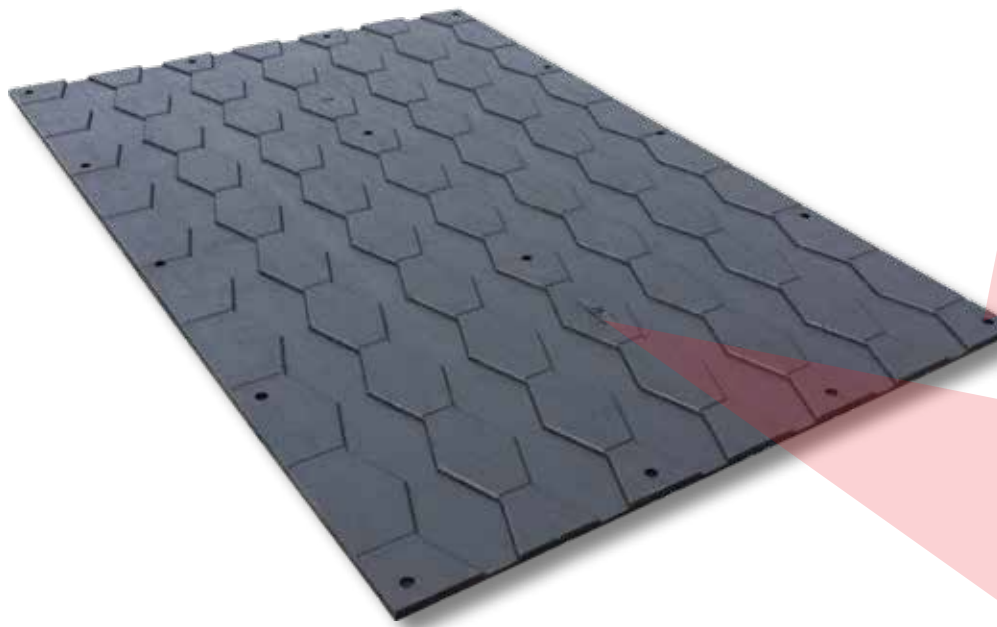
The wash bay was another problem area, again with the new concrete it became slippery when wet. RPS Industries provided Shane with the **SureFoot® mat**, the unique diamond pattern and non-slip surface helped provide a more secure footing so the chance of injury was dramatically reduced.

The **SureFoot® mat** was also installed for the horse walker where it is pivotal to have the durability and strength to combat the repetitious tracking of the horses. With the mats being fastened down there is less chance of friction, hence longer wear out of the mat.

With everything in place, the round yard was last to be completed. RPS provided 7.5mm smooth Cloth Insertion around the perimeter. This provides the safety of both horse and handler whilst keeping the sand within the boundary of the round yard.

For an added service we installed **SureFoot® mats** in the horse truck to provide a quality mat against the pouring of horses on those long trips to the races.

The **SureFoot® mat** is ideally suited for use in those extreme conditions when slippage may occur.



Benefits:

- The larger diamond pattern helps provide a secure footing in and around wet areas and steep inclines, reducing slippage.
- The **Surefoot® mat** is manufactured using a hard wearing and extremely durable rubber compound which has been especially formulated for this purpose. The compound blend of recycled and new virgin rubbers also features superior shock absorbing properties which provides outstanding protection for animals.



Technical Specifications

| | |
|--------------------|---|
| Thickness | 18mm |
| Length | 1830mm |
| Width | 1220mm |
| Weight | 50kg per mat |
| Material | Rubber (shore hardness 65+2) |
| Installation holes | 16 per mat |
| Method of fixing | Concrete fasteners; steel fasteners or timber fasteners |



Washbays



Horse Walkers



Pool Entrance



Ramps



Tunnels



Ramps

Wyong Racing Club - Pool surrounds



Cranbourne Training Centre - Matting in Underpass



Cranbourne Training Centre the largest Horse training facility in the Southern Hemisphere accommodates up to 800 horses per day.

An underpass which leads horses onto the centre of the ground previously had some old matting which was made up of laid pieces. These rubber pieces moved around, provided trip points, and were often slippery particularly when wet which made the underpass unsafe.

The facility considered several options and had some specific requirements, mainly the surface needed to be rubber and easy to clean.

For some years **SureFoot®** rubber matting products had been used in other areas of the facility and therefore was approached to forward a proposal on a suitable product for this application.

Simon Hodgson Tracks & Facility Manager had this to say;

*"It's normally very difficult to get projects up and running, but working with **SureFoot®** was fantastic. They worked around us and met the timeframes we needed to stay to.*

When you've potentially got about \$80 million of thoroughbred racehorses training around here, if one slips and does a tendon it makes it a very expensive mistake.

*It was costing us about \$40,000 per year to sand the tunnel to stop slipping, but now with **SureFoot®** matting I'm saving that money and more importantly, the riders and horses are safer.*

*I couldn't be happier with the project outcome and have recommended **SureFoot®** to others".*



Based on the experience and success of **SureFoot®** mats Cranbourne Training Centre installed a trial area. The mats provided immediate improvement by eliminating the slippery surface as well as any drainage problems associated with sand which was previously spread over the existing mats for traction and in turn, blocked up the drains.

From this positive outcome Cranbourne Training Centre engaged RPS to complete the entire area of 1000 sq.m. in the **SureFoot®** mat.

Since the installation the feedback from riders has been unquestionably good and the cleaning of the surface has taken significantly less time and without clogging up drains.

McEvoy Mitchell Racing



Kildalton Park is a multi-faceted state-of-the-art training facility located in Angaston in the heart of the Barossa Valley. It is home to **McEvoy Mitchell Racing** and accommodates up to 80 racing thoroughbreds.

The horses that are trained within the complex represent a substantial investment to the owners and shareholders and providing a safe and progressive environment for both the animals and facility staff is paramount in the complex's commitment in protecting these assets.

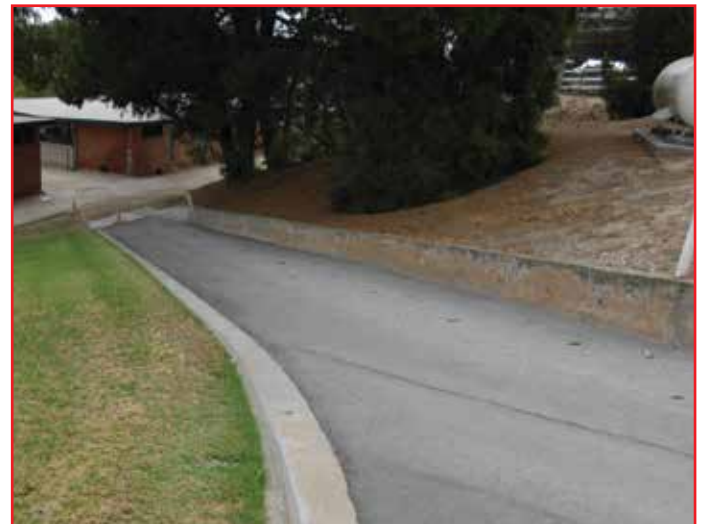
The undulating topography of the centre presented some challenges, particularly in wet weather when the surfaces were prone to becoming slippery.

Spokesperson Dave Gordon – had this to say;

"SureFoot® matting provided an outstanding solution to a horse welfare and work health safety risk when we used it to recommission a steep bitumised path that had become slippery due to wear."

"With SureFoot® matting both horse and handler can now access the route with confidence."

The proactive approach of McEvoy Mitchell Racing in the installation of the SureFoot® Equine mat has ensured that the potential risk to horses and handlers has been substantially reduced.

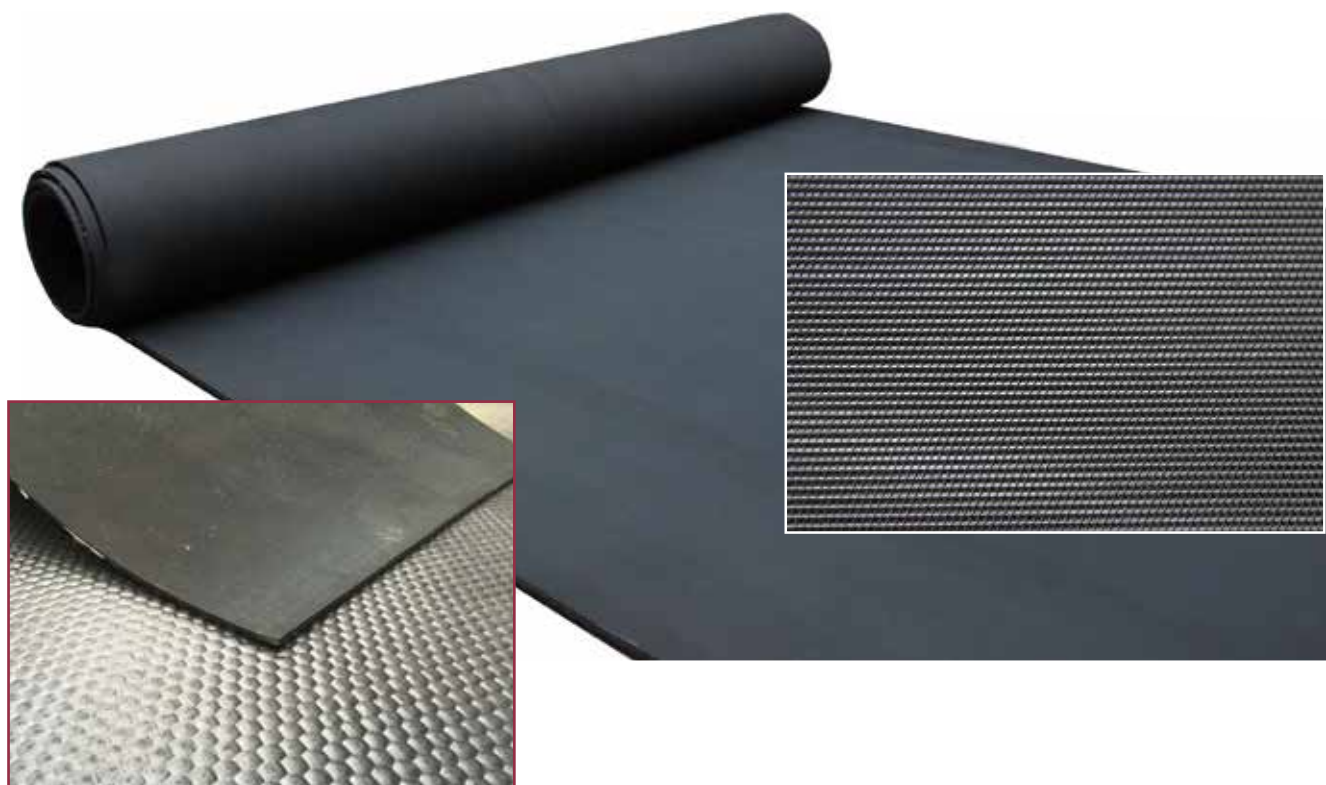


McEvoy Mitchell Racing became aware of the **SureFoot® mat** through their association with the Morphettville Race Course. They were impressed with the quality of the **SureFoot®** matting which RPS had installed at the racing club and initially contacted RPS to enquire about matting for their training pool.

During the consultation process, a potentially hazardous area between the stables and walker was identified and in accordance with their risk management strategy, a decision was made to install the **SureFoot® mat**. The result has been increased traction, smoother transition between areas and reduced risk to staff and horses.



A durable, anti-slip cloth insertion roll which provides maximum traction and cushioning. Protects animals and humans from stress injuries associated with standing for long periods of time.



Features and Benefits:

- Provides a cushion that protects animal and human joints and ligaments from stress injury
- Anti-slip design to reduce the risk of slipping and falling
- Non-porous so will not absorb fluids, nor support bacteria growth. It's also very easy to clean
- Long length rolls to reduce the need for butt joints
- Also comes in a hammertop finish for a cleaner surface

Applications:

- Breezeways
- Horse Floats
- Parade Rings
- Wash Bays

TECHNICAL SPECIFICATIONS

| Thickness | Patterns | Widths | Lengths |
|--------------|-----------|---------------|---------|
| 3.5mm | Smooth | 1.2m | 20m |
| 6mm | Smooth | 1.2m and 1.5m | 20m |
| 6mm | Textured | 1.65m and 2m | 10m |
| 6mm and 10mm | Hammertop | 2m | 20m |
| 10mm | Textured | 2m | 20m |



Wash Bays - Smooth Cloth Insertion



Walling - Smooth Cloth Insertion



Vet Room - Textured Cloth Insertion



Exit Ramps - Textured Cloth Insertion



Breezeway - Hammertop Cloth Insertion



Stable Complex - Textured Cloth Insertion

McDonald Equestrian



The McDonald's had this to say;

"We contacted several companies about flooring, but we felt they didn't have the product(s) specific to our purpose. After speaking with the team we knew they understood the purpose of each application and had the solution to suit our stable."

SureFoot® was flexible and made it work. They spent a lot of time making it perfect which is exactly what we wanted. During the installation they were flexible and responded to our needs. They also made further recommendations.

Now after several months of use, **SureFoot®** surfaces have met our expectations. The complex and wash bay are used every day, and I would absolutely recommend them to friends and other people".



To complete their new 'state of the art' stable complex, **McDonald Equestrian** extensively searched for a surfacing company which understood their specific purpose of the application.

The McDonald's own large horses competing at a high level, which require great comfort and support under foot. Especially after events when there is an increased chance of aching limbs, the comfort of soft yet durable flooring is critical to the horse's recovery.

After being referred, the McDonalds contacted us for a solution for their stable complex. As a specialized surfacing provider to the equine industry, we understood the McDonald's requirements and were able to recommend surfacing to fit the specific applications within the stable complex.

The challenge with the McDonald's stable was to provide a surface solution to suit each application within the stable complex. After discussion with the McDonalds, we recommended a different surface for each area of the complex.

The **SureCushion®** mat which provides exceptional comfort and warmth was recommended and fitted in the stalls. The **SureFoot®** mat, ideally suited to areas where slipping is a concern, was placed in the wash bay. This mat provides the horses with greater confidence when being washed and reduces the chance of horses falling over and causing injuries. The final and remaining area was covered with the highly durable and anti-slip 'equine insertion' matting. This forgiving and non-slip surface offers durability to outlast other surfaces of its kind.

SureFoot® Tailgate Mats *Technical Specifications*

*The **SureFoot® Tailgate mat** is the ultimate in tailgate mats and offers both premium quality and appearance. This attractively 'designed' mat is hard wearing and durable. It provides maximum traction and safety during floating for both horses and handlers...*

The unique ridged design of the **SureFoot® Tailgate mat** ensures your horse remains 'surefooted' during floating - protecting both animal and handlers.

Applications:

- Horse Floats
- Goose Necks
- Horse Trucks
- Ramps



Features and Benefits:

- Anti-slip ridging provides outstanding traction for horses which means less spooking and increased safety for animals and handlers
- Non-porous so will not absorb fluids, nor support bacteria growth. It's also very easy to clean.
- High quality rubber compound which is incredibly long lasting and attractive.
- A single piece can be applied avoiding the need for time wasting butt joints.

Environmental Benefits:

Being manufactured from reclaimed SBR/natural tyre rubber, the **SureFoot® Tailgate mat** is a 'green' product and reduces the carbon foot-print.

Technical Specifications

| | |
|------------------|------------|
| Thickness | 20mm Ridge |
| Width | 2000mm |
| Length | 1500mm |
| Hardness | 5MPA |
| Material | Rubber |



Loading Bay Ramp - First Point International Airport



Horse Float Tailgate



Transmend Floats, Trucks and Trailers



Transmend Floats, Trucks and Trailers are a family owned and operated business which not only manufactures custom built and quality floats and trailers but also undertakes smash-repairs, conversions and refurbishment of existing carriers.

Using only the best steel and finishing products available Transmend trailers are attractive, strong and durable. Phil and Sue take great care in ensuring that every vehicle to leave the factory floor is of premium standard and safe for both horses and humans.

Sue Sporys, joint owner of Transmend Floats Trucks and Trailers had this to say;

*"We chose **SureFoot®** products because of the quality..."*

The team are very efficient and provides good customer service... the products look nice and they do the job!

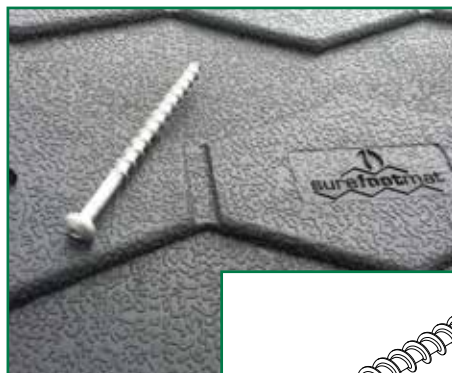
*We'll continue to use **SureFoot®** matting moving forward and are more than happy to recommend the product to others."*



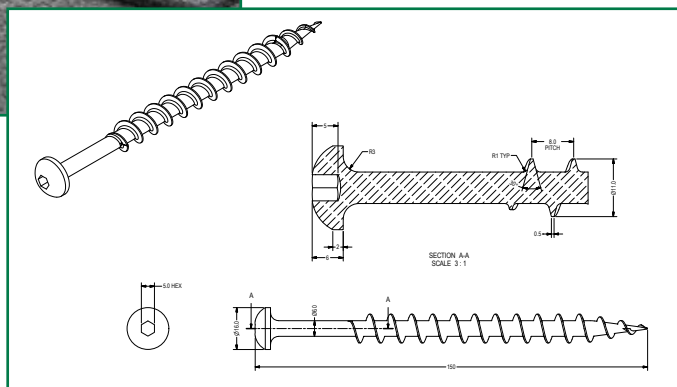
In her search for a quality rubber matting product which was to be **used in around 80% of the trailers produced**, Sue found **SureFoot®** matting via the internet and subsequently contacted us for further information and advice.

Impressed with the quality products, the expert advice and the customer service, Sue chose our matting products over other brands because of the superior quality. From this, a strong and lasting business alliance was formed and Sue commented that she has found *"the Company's approach and solution-focused recommendations to be 'wonderful'."*

No Concrete? No Problem! The **Agri Ground Cell®** System enables you to gain all the benefits of the patented **SureFoot® mat** without having to first lay a concrete base.



150mm specially designed ground screw for secure fixing.



The **Agri Ground Cell®** System can be installed directly over dirt and is specifically designed to provide a practical, durable and cost-effective solution for high traffic pressure points such as laneways and breezeways.

Benefits

- Enhances animal welfare and reduces lameness
- Easy to install, maintain and clean
- Prevents erosion in high traffic areas
- Cost effective - no need to lay a concrete base
- Reduces cross contamination between surface areas
- Excellent load bearing capacity

Applications:

- Laneways
- Crossovers
- Wash bays
- Day yards
- Stables

Technical Specifications

| | |
|----------------|---------------------|
| Thickness | 50mm |
| Width | 500mm |
| Length | 600mm |
| Crush strength | 225t/m ² |

An 'easy-fix' to a difficult problem . . .



The Agri Ground Cell® System - it's cost effective and it works!



Laneways - Before



Laneways - After



Stable Complex - Entrance



Stable Complex - Entrance



Stable Complex - With ProLite® matting



Stable Complex - With ProLite® matting



Lindsay Park Racing - Euroa



Excavation



Laying Ground Cell



Infill of Ground Cell



After compaction



Completion with **Surefoot®** mats



Technical Specifications



The **SureCushion® One Piece Stable** using our innovative 100% Polyethylene Foam Shock Pad which doesn't absorb moisture. When combined with its Geotextile top will provide the cushioning and comfort needed for the wellbeing of horses that may be lame or in need of rest.

Our **SureCushion® Cloth Insertion Rubber** is entirely glued down for added support and provides the durability needed for a "One Piece Stable".

Characteristic Benefits:

- Thermal and vibration insulation
- Highly durable
- Impact protection
- Lightweight
- Recycled green product reducing carbon footprint

Shock Pad Technical Specifications

| | |
|-----------|---------------------|
| Thickness | 23mm, 35mm and 45mm |
| Width | 900mm |
| Length | 2250mm |
| Material | 100% recycled PPE |

Applications:

- Stables
- Veterinary Clinics

Maffra Veterinary Clinic



Before installation



Installation of Shock Pad



Completion of Shock Pad



Laying of Cloth Insertion



Completion of flooring



After installation



Other Surfacing Applications



SureGrip® - MAT

Technical Specifications

| | |
|-----------|--------------|
| Thickness | 20mm |
| Length | 1830mm |
| Width | 1220mm |
| Weight | 50kg per mat |

Characteristic Benefits:

- Exceptional grip
- Reduces slipping
- Easy to clean

Applications:

- Ramps
- Tailgates
- Inclined areas



Deluxe Tailgate - MAT

Technical Specifications

| | |
|-----------|--------------|
| Thickness | 12.7mm Ridge |
| Width | 2135mm |
| Length | 1526mm |
| Hardness | 5MPA |

Benefits:

- Specifically designed for tailgates
- Non slip

Showcase Installations

Horse Studs



MUSK
CREEK
FARM

*Musk Creek Farm-Stud - Horse
Walker - **Pro-Lite**® mat*



ROSEMONT
Breeding Brilliance.

*Rosemont Stud - Horse Walker -
Surefoot® mat and **Pro-Lite**® mat*



SWETTENHAM
STUD

*Swettenham Stud - **Cloth
Insertion Rubber***



www.surefootmat.com.au



Showcase Installations

Horse Studs



Future Farms Arabians - Stables using **SureCushion®** mat



Hirsch Park - Laneway ramp using **SureGrip®** Mat



Yulong Stud - Stables using **SureCushion®** mats glued

Race Courses



Murray Bridge
Racing Club

Murray Bridge Racing Club -
Breezeway using **Pro-Lite®** mats



SANDOWN PARK

A Jockey Club Racecourse

Sandown Racing Club - Asphalt
Ramp using **Pro-Lite®** mats



Mornington **Racing** Club

Mornington Racing Club - Tie-Ups
using Hammertop and Smooth
Cloth Insertion

Showcase Installations

Race Courses



Murray Bridge
Racing Club

Murray Bridge Racing Club -
Tunnel using **Surefoot®** mats



Wyong Racing Club - Horse Pool
using **Surefoot®** mats



Cranbourne Turf Club - Over-
pass using **ProLite®** mats



Equine Complexes



*Inglis Sales Complex - Using
Pro-Lite® mats*



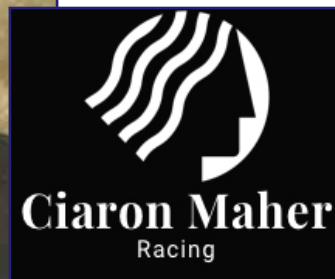
*Sylvan Lodge - Stable Complex,
using Hammertop Cloth Insertion,
Pro-Lite® mats and **SureCushion®**
mats*



*Equine Train Complex - Using
Pro-Lite® mats*

Showcase Installations

Training Centres



*Ciaron Maher Racing Stables
using **SureCushion**® mats*



*Godolphin Complex - Wash Bays
using **Surefoot**® mats*

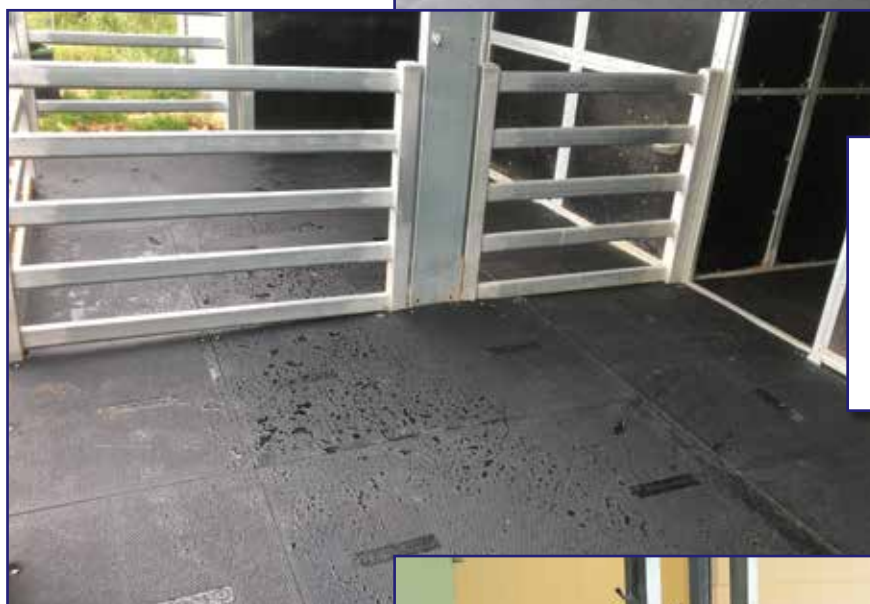


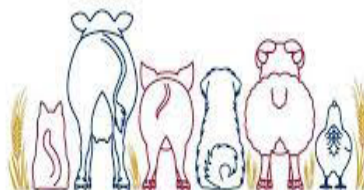
*Jason Warren Racing - Horse
Walker using **ProLite**® mats*

Veterinary Clinics

SEYMOUR
EQUINE CLINIC

Seymour Equine Clinic - Crush area using Cloth Insertion matting




Golden Plains Animal Hospital

*Golden Plains Veterinary - Day yard using **SureCushion®** mats*

South Eastern



Equine Hospital

*South Eastern Equine Hospital - Examination area using **Cloth Insertion** matting*





Sales Hotline: 1800 255 943 Email: sales@rpsindustries.com.au
RPS Industries Pty Ltd - 8 Venture Way, Pakenham, Victoria 3810

RPS
INDUSTRIES
www.surefootmat.com.au